



ANAFS USAR TEAM Organization

1. Team Management

Team Leader	Luís Pimentel
Planning Officer	António Calinas
Safety-Security Officer	Vasco Rodrigues (*)
Public Information Officer	Teresa Madeira
Liaison Officer	Paulo Fé

2. Technical Squads (2)

Rescue Manager ALFA	Manuel Simões
Rescue Manager BRAVO	Joaquim Craveiro
Structure Specialist ALFA	Sara Nunes
Structure Specialist BRAVO	João Luís Ferreira
Hazardous Materials Leader ALFA	André Gil
Hazardous Materials Specialist BRAVO	Carvalho Xavier (**)

3. K9 Search Squads (2)

K9 Search Squad Leader ALFA	José Viana
K9 Search Squad Leader BRAVO	Júlio Oliveira
K9 Search Handler Specialist ALFA	Paulo Garcia
K9 Search Handler Specialist ALFA	Avelino Almeida
K9 Search Handler Specialist ALFA	Diogo Moço
K9 Search Handler Specialist BRAVO	Gonçalo Santos (**)
K9 Search Handler Specialist BRAVO	Ana Mendes (**)
K9 Search Handler Specialist BRAVO	Carla Pinheiro (**)
Veterinarian ALFA	Amadeu Salvador (**)
Veterinarian BRAVO	

4. Rescue Squads (4)

Rescue Squad Leader ALFA	Murilo Lizardo
Rescue Squad Leader BRAVO	Nelson Mariano
Rescue Squad Leader CHARLIE	José Bragança
Rescue Squad Leader DELTA	Fernando Baptista
Rescue Specialist ALFA	Ricardo Rito
Rescue Specialist ALFA	João Gaspar
Rescue Specialist BRAVO	João Moura
Rescue Specialist BRAVO	Jorge Perestrelo
Rescue Specialist CHARLIE	Tiago Rêgo
Rescue Specialist CHARLIE	Johny Rosário
Rescue Specialist DELTA	Vasco Tavares
Rescue Specialist DELTA	Nuno Marques
Rescue Specialist Squad Logistics ALFA	João Coxilha (DL)
Rescue Specialist Squad Logistics BRAVO	Leonardo Pereira (DL)
Rescue Specialist Squad Logistics CHARLIE	Rogério Silva (DL)
Rescue Specialist Squad Logistics DELTA	Jorge Ferreira (DL)
Rescue Specialist Squad EMT ALFA	Luís Madeira
Rescue Specialist Squad EMT BRAVO	João Alegria
Rescue Specialist Squad EMT CHARLIE	Cláudia Aguiar
Rescue Specialist Squad EMT DELTA	António Marques



5. Medical Squads (2) (***)

Medical Squad Leader (Physician)	Isabel Simões
Physician	Ricardo Bordón
Nurse Leader ALFA	Carina Fernandes
Nurse ALFA	Rodrigo Pacheco
Nurse Deputy Leader BRAVO	Marta Alves
Nurse BRAVO	Rui Pina **
Nurse Squad Logistics ALFA	Ivone Carlos
Nurse Squad Logistics BRAVO	Ricardo Pires
EMT Specialist ALFA	Tânia Strecht **
EMT Specialist BRAVO	Anna Knoch **

6. Support Squads (2)

Communications Squad Leader (ALFA)	Pedro de Sousa
Communications Specialist BRAVO	Nuno Rodrigues
Logistics Specialist BRAVO	Patrícia Muñoz
Logistics Squad Leader (ALFA)	Inês Melo e Castro
Chief Truck Driver ALFA (EMT)	Alfredo Leal
Truck Driver BRAVO (EMT)	Jerry Ferreira
Maintenance Squad Leader (ALFA)	António Pacheco
Maintenance Specialist BRAVO	Manuel Alves

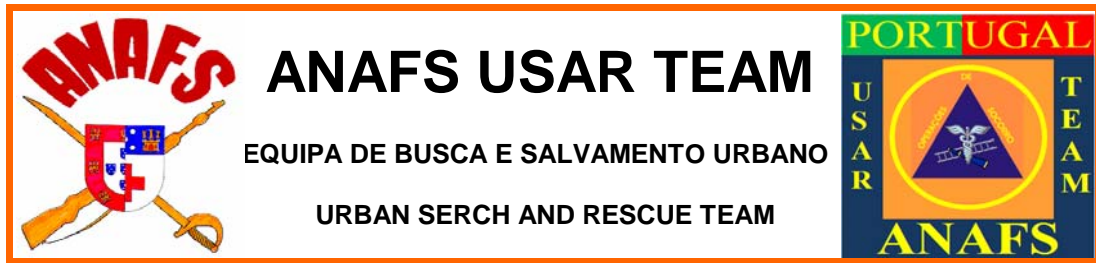
(**) Without Specialisation in this moment

(***) Triage and First Aid Medicalized Post Squads

The ANAFS USAR TEAM, with its organization chart, equipment cache, stand-by operational response time in the affected country within 32 hours of the posting of the disaster, capacity of deployment, ability to sustain 24-hous operations at 1 site during 7 days, and type of structures where have capability to perform rescues, is classified as a Medium USAR Team in accordance with the “INSARAG USAR Team System Classification”.

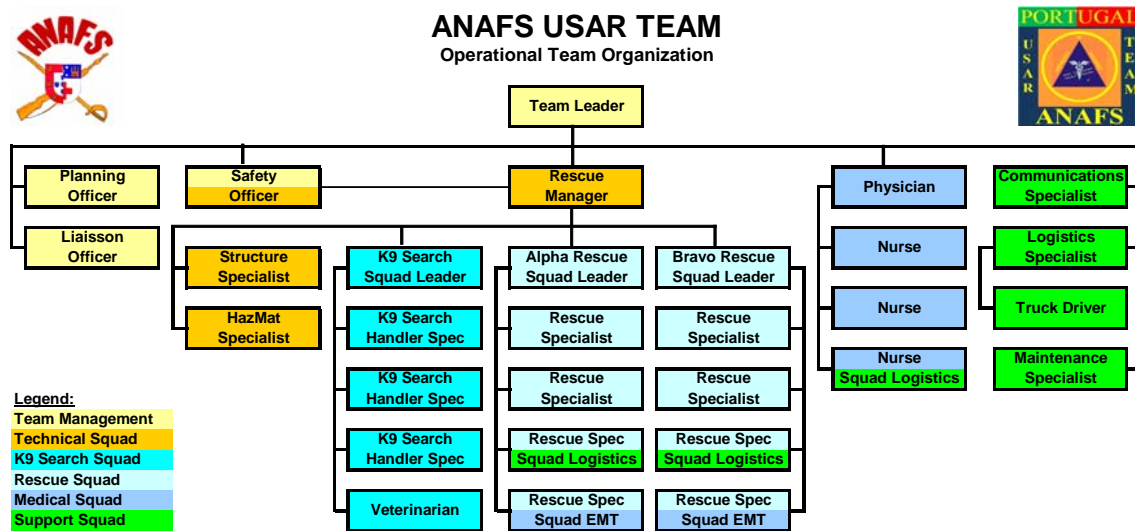
This classification implies that in operational terms the ANAFS USAR TEAM must be able to respond with one team of about 30 elements, with the five basic functions of USAR teams as stated in the INSARAG Guidelines:

- Management
- Search
- Rescue
- Medical
- Logistics



So, and taking account that with the exception of the Team Management all the functions and positions on the ANAFS USAR TEAM must have normally at least 2 persons each, it was decided to organized the Team in two operational groups, designated by yellow and orange groups, as a way to ensure that the Team is always available with the 30 elements team to respond within the 12 hours stand-by time for deployment.

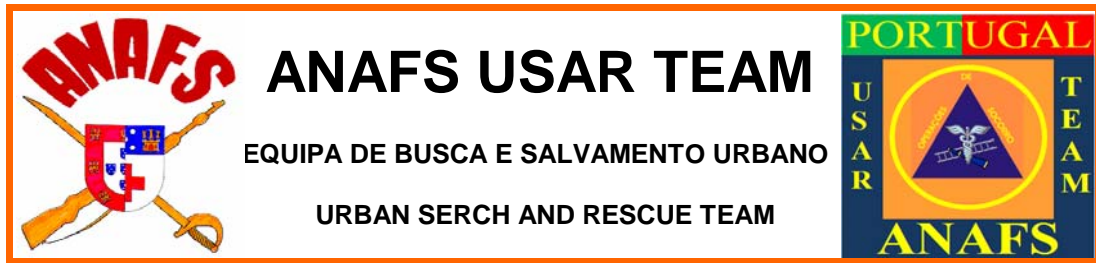
Each operational group must have minimum 30 elements in the management team and six squads (technical, k9 search, alpha and bravo rescue, medical and support) covering the different functions and positions, as shown in the following chart:



As a fact that all personnel of the ANAFS USAR TEAM are cross trained as rescuers, each group have the possibility to additionally staff one 3rd rescue squad, designated by ECHO Rescue Squad, to work, if necessary, as a Reserve, Backup and Rapid Intervention Team (RIT) of the Group two organic Rescue Squad. This rescue squad will be staffed as showed in the following chart:

Charlie Rescue Squad Positions	1st due staffed by	2nd due staffed by
Rescue Squad Leader	Rescue Manager	Safety Officer
Rescue Specialist	Logistics Specialist	Liaison Officer
Rescue Specialist	Truck Driver	Structure Specialist
Rescue Specialist Squad Logistics	Maintenance Specialist	HazMat Specialist
Rescue Specialist Squad EMT	Nurse	Nurse

The existence of those two operational groups, structured independently only for the purpose of allowing the personnel been allocated on the different functions and positions, do not imply that the personnel will always be operational deployed in those groups and squads, by the contrary, the experience shows us that in critical situations we always have people that are not available for deployment in that precise moment, so in order that the Team may be always deployed with all the functions and positions staffed, that implies that the unavailable



personnel from the group that are on stand-by in that period, will be substituted by the personnel of the group that are off-duty.

YELLOW Operational Group Organizational Chart

TECHNICAL SQUAD ALFA
K9 SEARCH SQUAD ALFA
RESCUE SQUAD ALFA
RESCUE SQUAD BRAVO
MEDICAL SQUAD ALFA
SUPPORT SQUAD ALFA

GREEN Operational Group Chart

TECHICAL SQUAD BRAVO
K9 SEARCH SQUAD BRAVO
RESCUE SQUAD CHARLIE
RESCUE SQUAD DELTA
MEDICAL SQUAD BRAVO
SUPPORT SQUAD BRAVO